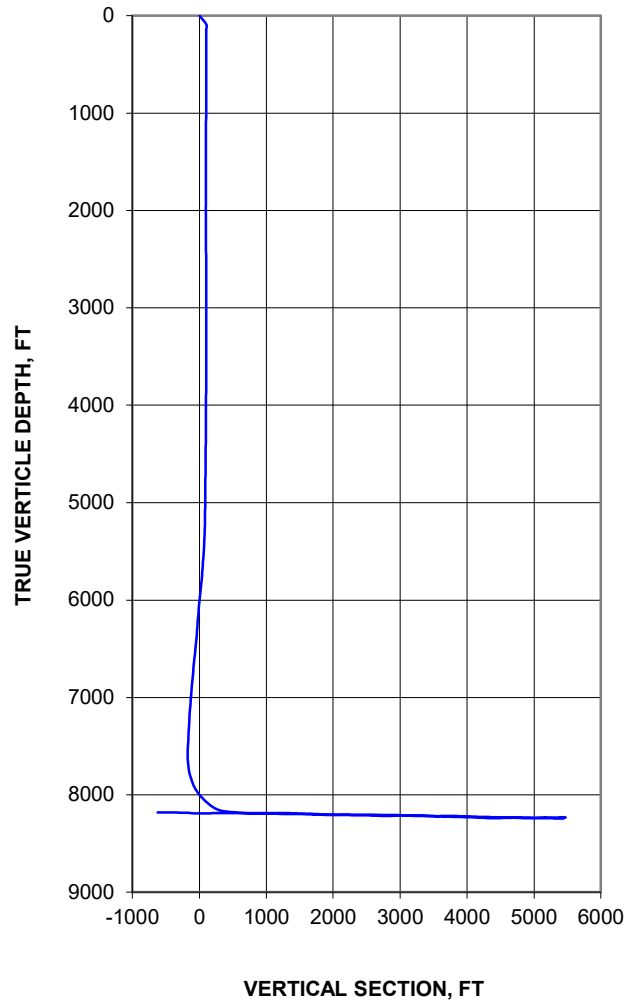


# Minimum Radius of Curvature

API: 42-479-43146	Well: Gates 010-CHK-A TR3 N2H	WH Location	Lat: 28.052808
Operator: Chesapeake Energy	Area: Eagleford		Long: -99.857186
Rig: Patterson 596	Type: U-Lateral	Magnetic Declination: 4.53	
TD: 20,300'		Plane of Proposal: 115.00	

VERTICAL SECTION



HORIZONTAL PLAN

