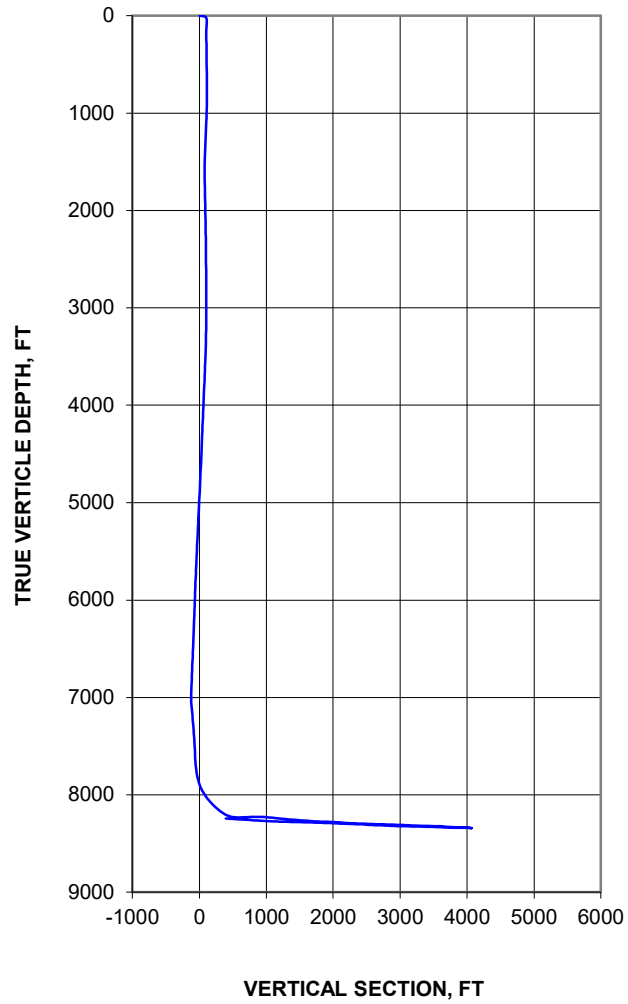


# Minimum Radius of Curvature

API: 42-479-44608	Well: Gates 010-CHK-A TR3 O 1H Wellhead Location	Lat: 28.04241
Operator: Chesapeake Energy	Area: Eagleford	Long: -99.85696
Rig: Nabors 887	Type: U-Lateral	Magnetic Declination: 4.43
TD: 16,438'		Plane of Proposal: 115.00

VERTICAL SECTION



HORIZONTAL PLAN

