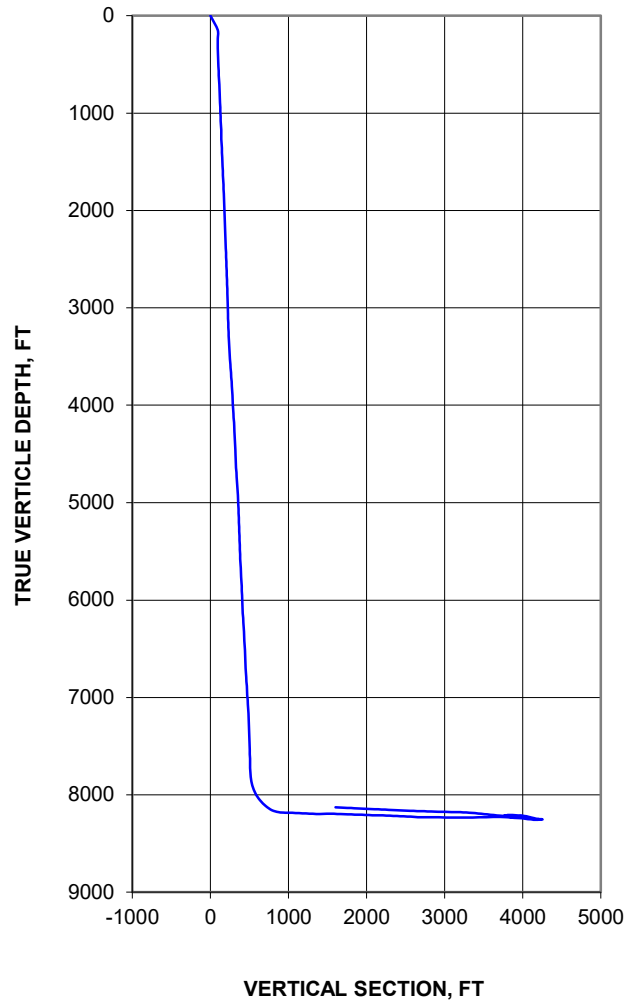


Minimum Radius of Curvature

API: 42-479-44872	Well: Gates 010-CHK-B 1286 W1H	WH Location	Lat: 28.10694
Operator: Chesapeake Energy	Area: Eagleford		Long: -99.82453
Rig: H&P 482	Type: U-Lateral	Magnetic Declination: 4.78	
TD: 17,846'		Plane of Proposal: 135.00	

VERTICAL SECTION



HORIZONTAL PLAN

