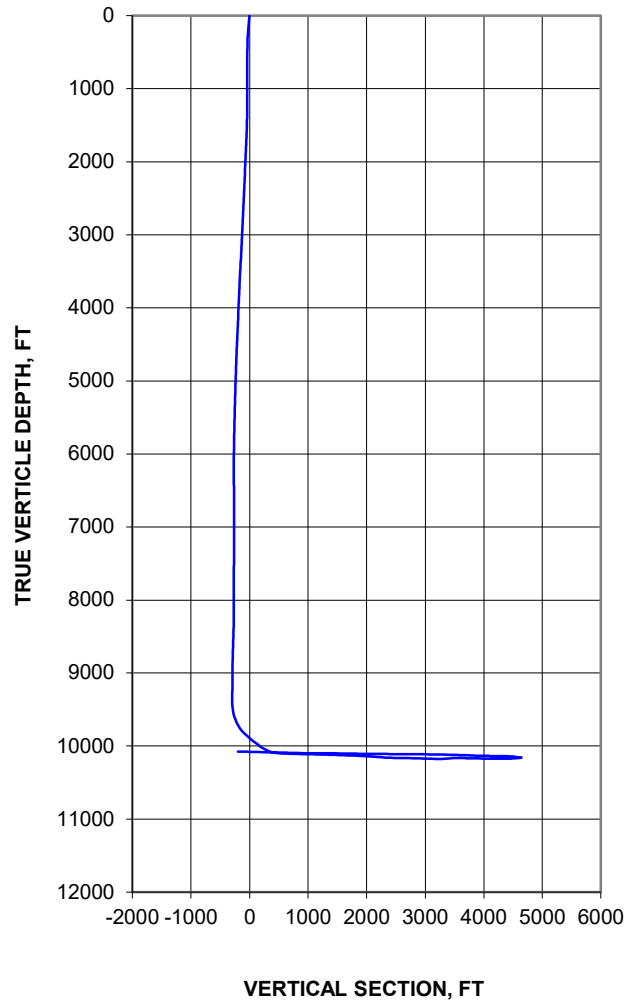


Minimum Radius of Curvature

API: 42-389-39373	Well: Old Monarch State 2 A2HU	WH Location	Lat: 31.73854
Operator: PDC	Area: Orla		Long: -103.91456
Rig: H&P 629	Type: U-Lateral	Magnetic Declination:	6.62
TD: 20,559'		Plane of Proposal:	1.00

VERTICAL SECTION



HORIZONTAL PLAN

