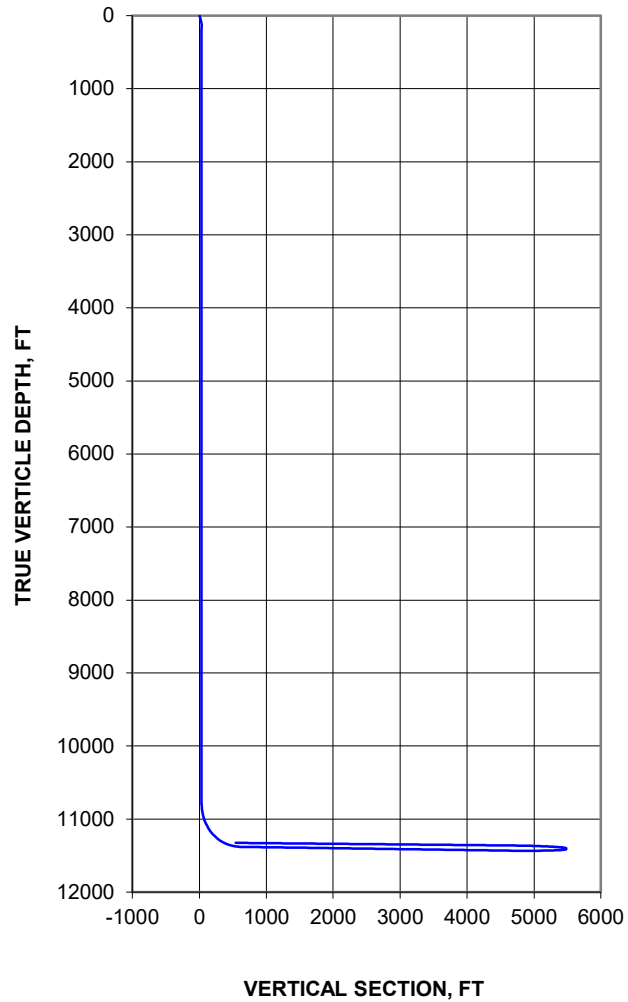


# Minimum Radius of Curvature

API: 30-015-53278	Well: Vanadium 32 State 175H	Wellhead Location	Lat: 32.26943
Operator: Occidental	Area: New Mexico		Long: -103.79539
Rig:	Type: U-Lateral	Magnetic Declination: 6.85	
TD: 22,818'		Plane of Proposal: 179.68	

VERTICAL SECTION



HORIZONTAL PLAN

